

# BBC PLANT MEWN ANGEN

P

---

L

---

A

---

N

---

T

---

M

---

E

---

W

---

N

---

A

---

N

---

G

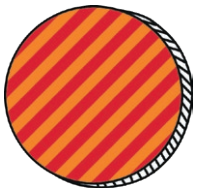
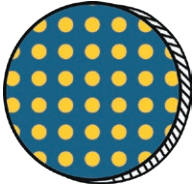
---

E

---

N

---



© BBC 2007 Reg. Charity England & Wales no. 802052 and Scotland no. SC039557

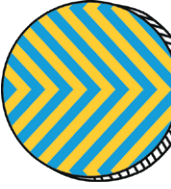


Proud Schools Partner  
Partner Ysgolion Balch

visit [twinkl.com](https://www.twinkl.com)



# BBC PLANT MEWN ANGEN



P \_\_\_\_\_

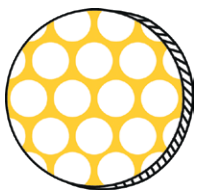
U \_\_\_\_\_

D \_\_\_\_\_

S \_\_\_\_\_

E \_\_\_\_\_

Y \_\_\_\_\_



Proud Schools Partner  
Partner Ysgolion Balch

visit [twinkl.com](https://www.twinkl.com)



# BBC PLANT MEWN ANGEN



S

---

M

---

O

---

T

---

I

---

A

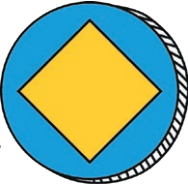
---

U

---



# BBC PLANT MEWN ANGEN



S \_\_\_\_\_

P \_\_\_\_\_

O \_\_\_\_\_

T \_\_\_\_\_

A \_\_\_\_\_

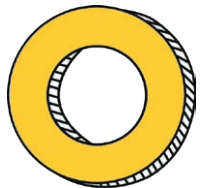
C \_\_\_\_\_

U \_\_\_\_\_

L \_\_\_\_\_

A \_\_\_\_\_

R \_\_\_\_\_



© BBC 2007 Reg. Charity England & Wales no. 802052 and Scotland no. SC039557



visit [twinkl.com](https://www.twinkl.com)



Proud Schools Partner  
Partner Ysgolion Balch